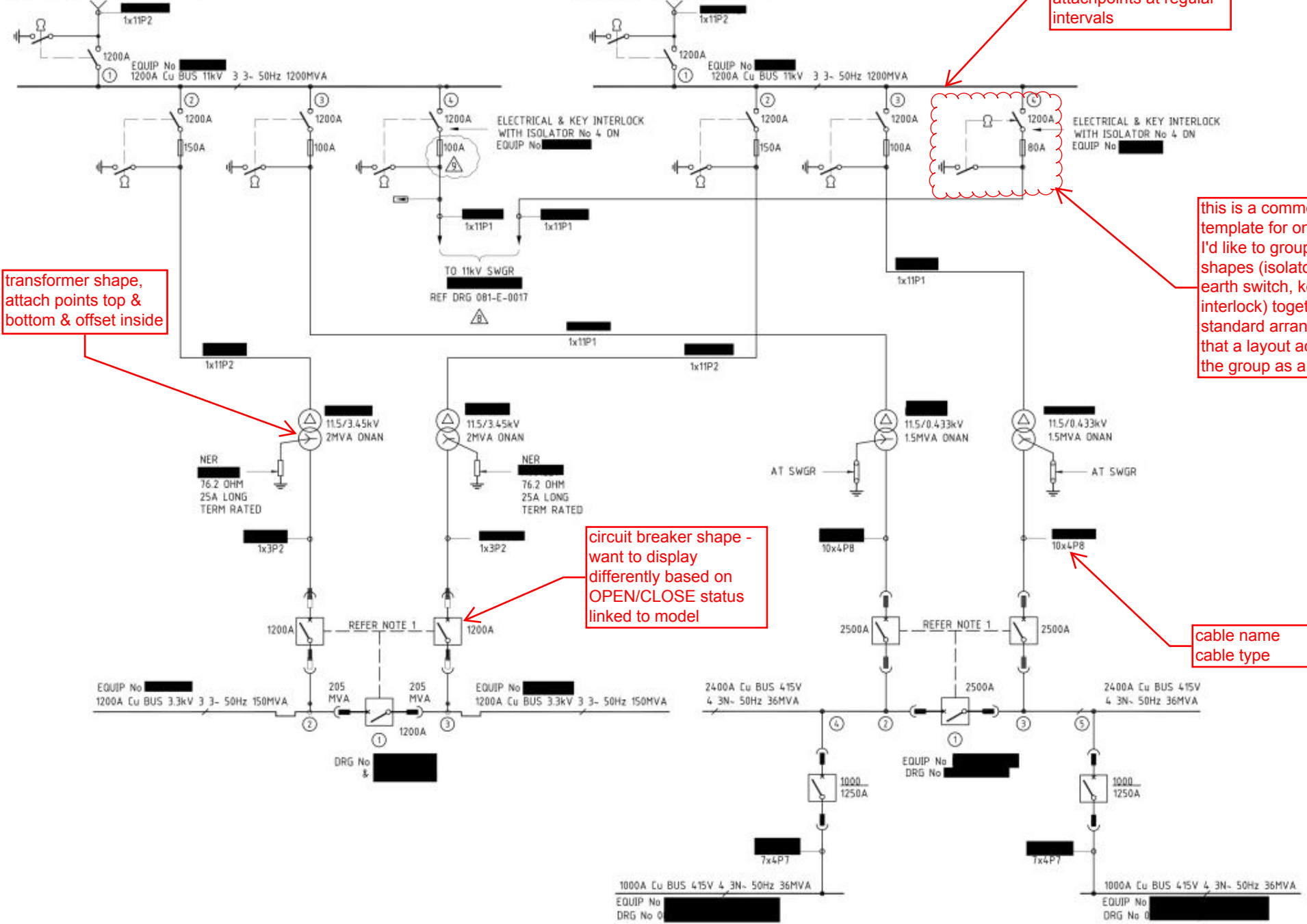


FROM 11kV SWITCHGEAR EQUIP. No. Nxxxxxxx  
CIRCUIT BREAKER 104 DRG [REDACTED]

FROM 11.5kV SWITCHGEAR EQUIP. No. N [REDACTED]  
CIRCUIT BREAKER 201 DRG [REDACTED]



transformer shape, attach points top & bottom & offset inside

busbar shape - set of attachpoints at regular intervals

this is a common template for one bay. I'd like to group several shapes (isolator, fuse & earth switch, key interlock) together in a standard arrangement that a layout acts on the group as a whole.

circuit breaker shape - want to display differently based on OPEN/CLOSE status linked to model

cable name cable type